



## Post 16 Options - Looking Ahead

What am I good at?  
What am I interested in?  
What are my predicted grades?

How do I learn best?  
Practical/Hands on?  
Theory, Research?  
Does it depend what I want to learn?

Which route best suits your skills, interests and future plans?

### Where to start with your exploration:

Some students select subjects based purely on what they enjoy, and these can be a mixture of academic, creative and vocational courses. This balance is often beneficial to students and ensures they have some variety in their timetable.

Students with clear career goals in mind should investigate which courses work well together and which subjects they need to study to access their chosen career or university course.

Ensure you select course combinations which are acceptable by universities/or particular apprenticeships/career. Some subjects such as Media Studies and Film Studies can be seen by some universities to work well together, however some universities may see them as being too similar and covering common ground.

Are you ready for the world of work?

#### Apprenticeships :

- Vocational qualifications gained through placement/ job in industry
- Applied learning – theory links in with practical activity
- Portfolio of evidence and reflective accounts plus practical assessments
- Gaining real working experience while gaining a qualification

### Qualifications explained

Five or more grade 4's (A\* to C grades) at GCSE

3-4 A levels **or ..**  
Level 3 BTEC/ T Level **or ..**  
Advanced apprenticeship

**Help my target grades are lower than 4's**

If you are borderline 4's or 5's (C/D) then get motivated to get 5's and above (C's)  
If you are predicted 4's and below (Ds and E's) you still have options...

Grade 3's (Ds at GCSE)

Level 2 BTEC or  
Intermediate apprenticeship

Less than grade 2's (Ds) at GCSE

Level 1 BTEC Diploma

#### A levels:

- Academic – theory based, abstract and critical thought
- Learning about a subject through lessons, reading and research.
- Essays, exams and coursework
- For you if you've enjoyed learning and studying at school
- Gateway to higher education

#### BTEC or similar:

- Vocational and often linked to an industry
- Applied learning – theory links in with practical activity
- Coursework and practical assignment based – some exams
- Gateway also to higher education

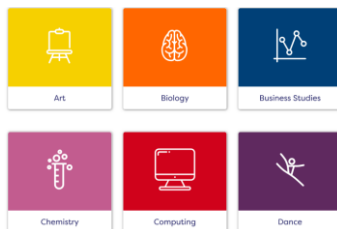
#### T Levels:

T Levels are equivalent to 3 A levels. T Levels offer students a mixture of classroom learning and 'on-the-job' experience during an industry placement of at least 315 hours (approximately 45 days). [Click here for the latest updates on the new T-Level releases](#)

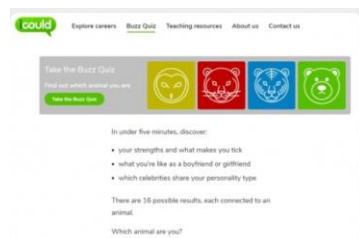
### Research

- If you know what you want to do as a career – [www.nationalcareerservice.direct.gov.uk](http://www.nationalcareerservice.direct.gov.uk)
- [www.prospects.com](http://www.prospects.com) – Careers information & Quiz
- If you want to go to university – [www.ucas.com](http://www.ucas.com)
- Subject interests at GCSE – **have a look at the course guides for colleges, on-line on their websites and at their open evenings**
- If you think you would suit an apprenticeship [www.apprenticeships.org.uk](http://www.apprenticeships.org.uk)

\*Start with a subject  
Choose a subject you love and see where it might lead



\*Discover your strengths  
Personality type quiz



\*Click on icons