

Welcome to



Wimbledon College

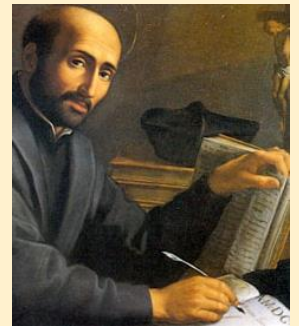
Open Evening 2023

Headteacher Adrian Laing

WIMBLEDON COLLEGE



*“improvement
in living and learning
to the greater glory of God
and the common good”*



St Ignatius Loyola
(1491-1556)

Jesuit schools should be places :

- where people are believed in, honoured and cared for;
- where the natural talents and creative abilities of persons are recognized and celebrated;
- where individual contributions and accomplishments are appreciated;
- where everyone is treated fairly and justly;

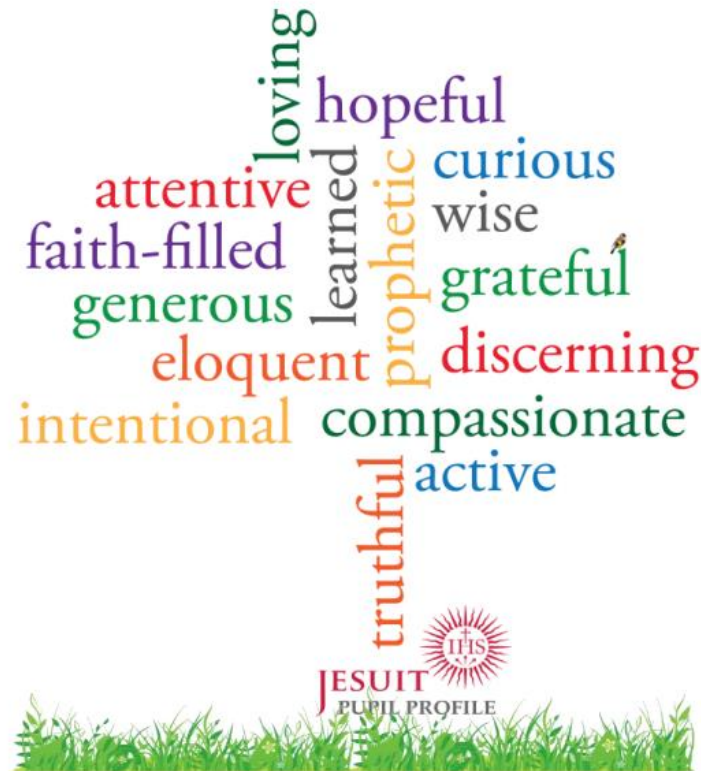
Ignatian Pedagogy n.37

Jesuit schools should be places :

- where each of us finds the challenge, encouragement and support we need to reach our fullest individual potential for excellence;
- where sacrifice on behalf of the economically poor, the socially deprived, and the educationally disadvantaged is commonplace;
- where we help one another and work together with enthusiasm and generosity

Ignatian Pedagogy n.37

Jesuit Pupil Profile



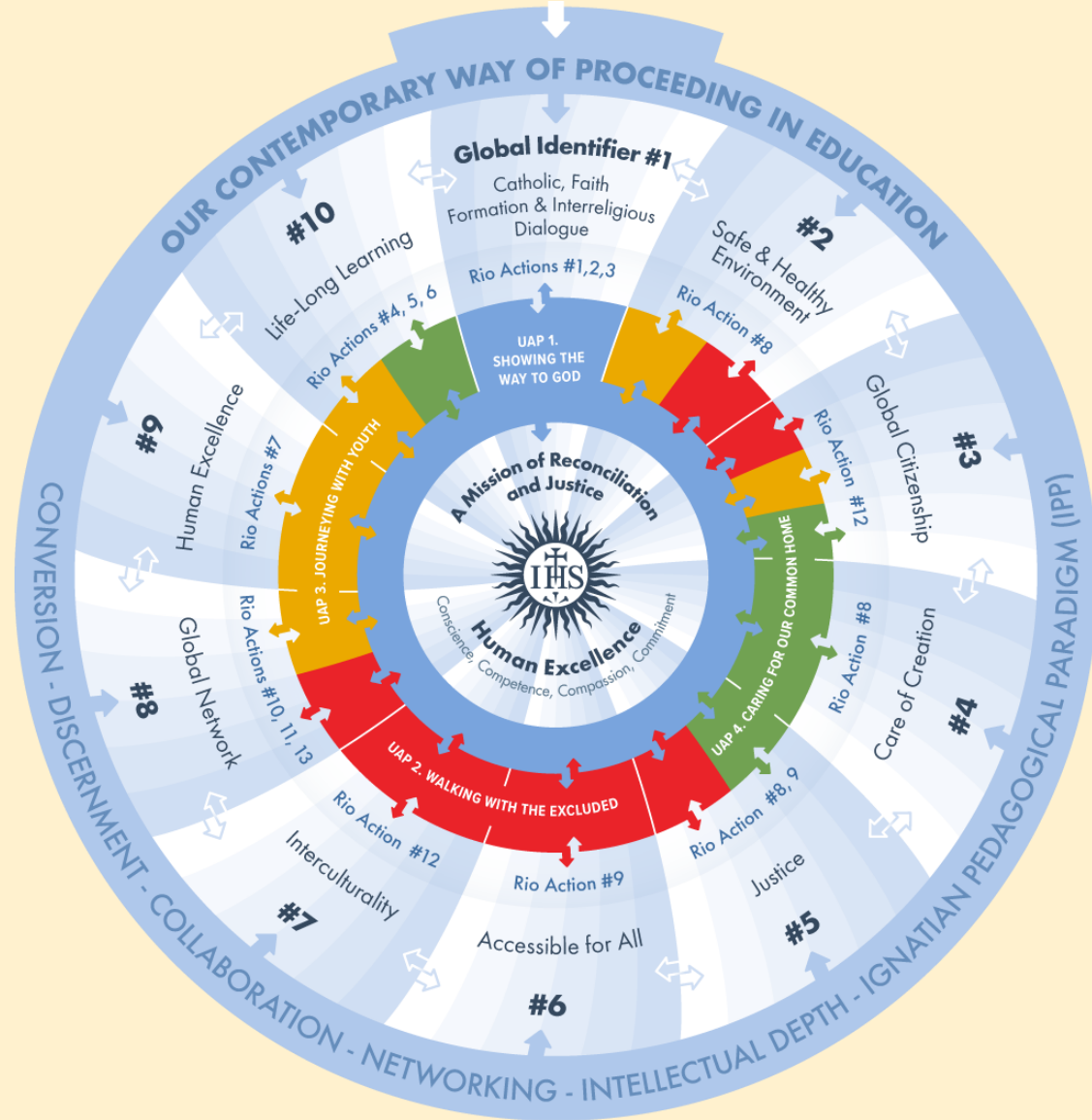
“What can we say the kingdom of God is like? It is like a mustard seed which, at the time of its sowing in the soil, is the smallest of all the seeds on earth; yet once it is sown, it grows into the biggest shrub of them all and puts out big branches so that the birds of the air can shelter in its shade.”

Gospel of St Mark 4:30-32 NRSV

WIMBLEDON COLLEGE

Jesuit Schools Global Identifiers

- Being Catholic and to offer in-depth faith formation in dialogue with other religions and worldviews
- Creating a Safe and Healthy Environment for all
- Global Citizenship
- The Care of all Creation
- Justice
- Being Accessible for All
- Interculturality
- Being a Global Network at the service of the Mission
- Human Excellence
- Life-Long Learning



Christian community

- Pastoral Team
- *Cura personalis*
- Chaplaincy Team
- Prayer and worship
- Chaplaincy activities
- Charities
- Service
- Theology

Ofsted March 2023

Good

- Leaders are ambitious for pupils to have an enriching experience at the school...there is a broad and varied curriculum in place, including in the sixth form.
- Pupils make good use of the broad array of opportunities.
- Leaders ensure a calm, orderly environment for pupils.
- Pupils conduct themselves responsibly and with respect during lesson time and around the school. Pupils are happy and safe here.

Ofsted March 2023

Good

- Leaders carefully consider what to teach pupils to prepare them well for the future, including important information about health, relationships and the world around them.
- Teachers have excellent subject knowledge. They use it particularly well to help pupils engage in considered discussion about what they are learning.
- Pupils are respectful and motivated to learn. They work hard in lessons.

Diocesan Inspection December 2022

‘Wimbledon College is an outstanding Catholic school’

- A strong Jesuit identity is reflected in the common language, vision and actions of all members of the school community.
- The pupils are proud of the Jesuit traditions and regularly put these into practice in their daily lives taking full advantage of the many opportunities provided to them.

Year 11 Results 2023

- 87% achieved 4+ in English & Maths [80%*]
- 68% achieved 5+ in English & Maths [58%]
- 71% of pupils achieved 2 Sciences 5+ [69%]
- 37% of all grades at least Grade 7 [28%]
- 72% of all grades at least Grade 5 [64%]
- 19 % of pupils gained at least 8 9-7 [10%]
- 47% of pupils gained at least 3 9-7 [37%]
- 51% achieved the Ebacc pass [49%]

Vocational – D*/D 20%; D*/M 44%; D*/P 100%

**2019 data in italics*

Individual successes - GCSE

- Diego achieved 11 Grade 9s
- Franek achieved 8 9s & 3 8s
- Lucas achieved 8 9s & 2 8s
- Connor achieved 8 9s and 1 8
- Jack achieved 8 9s & 2 7s
- Harry achieved 7 9s & 3 8s

43 pupils achieved at least 7 Grade 7s or above

74% of year group have stayed with us into Poetry

Sixth Form Results 2023

A Levels

A*/A	22%	[19%*]
------	-----	--------

A*/B	56%	[43%]
------	-----	-------

A*/C	80%	[71%]
------	-----	-------

Vocational

D* - D	45%	[32%]
--------	-----	-------

D* - M	90%	[71%]
--------	-----	-------

D* - P	100%	[100%]
--------	------	--------

**2019 data in italics*

Individual successes

Aristotle	2 A*, 2 A <i>Finance LSE</i>
Adam	2A*, 2A <i>Computer Science Surrey</i>
Charlie	2 A*, A <i>English Literature at College, Oxford</i>
Anton	A*, 2A <i>Finance, Accounting & Management Nottingham</i>
Gabriel	A*, 2A <i>Medicine St Andrews</i>
James	A*, 2A <i>Comp. Sci. with Cyber Security Southampton</i>
James	A*, 2A <i>Sports Management & Coaching Bath</i>
Lucas	A*, 2A <i>Finance at City, University of London</i>
Jurgen	D*D & D <i>Cyber Security & Digital Forensics at Middlesex</i>
Blake	DD & D <i>Taking a gap year</i>
Clive	DD & D <i>Computer Science at West London</i>

Sixth Form Progression

101 students progressing to university

Variety of courses

Accounting, Architecture, Biomedical Sciences, Chemistry, Computer Science, Economics, Engineering [various], English,, Geography, International relations, Law, Mathematics, Medicine, Pharmacy, Politics, Sports Science, Teaching

Degree apprenticeships

Atkins Engineering, Deloitte, Metropolitan Police, TFL, Unilever

Sixth form

- well-established
- 270 boys in September 2023
- dedicated facilities
- wide range of courses
- strong *cura personalis*
- extra-curricular activities
- Christian life



Special educational needs

- Physical, emotional, behavioural and learning needs
- SEN teachers & Learning support assistants
- Literacy and numeracy recovery
- Support for the more able
- Importance of early communication
- Realistic expectations





Wider school life

- not 8.30 to 3.10
- wide range of activities beyond the classroom
- expectation of involvement

Sports programme

- rugby
- football
- basketball
- swimming
- athletics
- cricket
- boxing
- cross country
- water polo



WIMBLEDON COLLEGE



WIMBLEDON COLLEGE



Extra-curricular activities



- Music – choir & orchestra
- Swing Band; Strings Project
- Drama
- DT Club
- Comic club
- Debating
- Lego club
- Literature club
- Chess
- Warhammer
- Army cadets
- Duke of Edinburgh

School community

- Cura personalis
- Christian community
- Studies
- Extra-curricular activities
- High expectations
- A sense of purpose
- Reward and recognition
- Firm discipline



Induction for Figures pupils

- Test Morning
- Head of Figures visits primary schools
- Year 6 Transition Day
- Figures Playground
- Early break and lunch
- Escorted to lessons
- Welcome Mass
- Parent Tutor Evening

ADMISSIONS

Oversubscription Criteria

1. Catholic boys who are looked after children or looked after children in the care of Catholic families or who were previously looked after children
2. Catholic boys who have special circumstances
3. Catholic boys who attend Mass every Sunday and Holyday
4. Catholic boys who attend Mass less frequently than every Sunday and Holyday
5. Catholic boys who do not attend Mass
6. Boys enrolled in the catechumenate
7. Other boys who are looked after or previously looked after.
8. Boys who are members of the Eastern Orthodox Churches.
9. Boys of families who are members of other Christian denominations that are part of Churches Together in England
10. Boys who are members of other faiths
11. Other boys

Tiebreaker Criteria

1. Brother[s] at Wimbledon College or sister[s] at Ursuline High School, Wimbledon in September 2024
2. Parent is employed by Wimbledon College
3. Distance – from boy's home to Wimbledon College

On the advice of the Education Commission of the Archdiocese of Southwark the governing body of Wimbledon College has agreed the following statement in order to clarify how its faith-based oversubscription criteria will be interpreted in light of the suspension of the obligation to attend Sunday Mass between 18th March 2020 and 4th June 2022.

As of the 5th June 2022, Pentecost, the Bishops of England and Wales reinstated the obligation to attend Mass on Sundays and Holy Days. Parents applying for a place at Wimbledon College, under a faith-based criteria will need to complete a Supplementary Information Form and Religious Practice and Priest's Reference Form. Evidence of practice will be measured by frequency of attendance at Mass as validated by either a priest or minister, as was the case prior to 18th March 2020. These arrangements apply to the admissions round for 2023 and subsequent rounds.

Admissions 2022

boys applied to Wimbledon College 584 (539, 661,601)

Catholic boys in public care	1	
Baptised and practising Catholics	397	(428, 518, 495)
Other boys in public care	2	
Others	184	(107, 140,102)

4 boys applied under special circumstance (6,3,8)

Admissions Offers of Places

	2023	2022	2021	2020
EHCP	8	9	12	14
Special circumstances	1	1	1	1
TOTAL	199	199	199	199

2023

- 1 appeal – not upheld
- March offered places to pupils in all of our admission categories
distance used as a tie break in Category 11 [March 3.780km, September 7km]
- Short waiting list for Year 7. Waiting lists for Years 9&10

2022

- 0 appeals
- March offered places to pupils in all of our admissions criteria
- Offered to all Categories by September
- Currently do not have any pupils on our waiting list for Year 7; we do for Years 8-10

Free Map Tools

Maps you can make use of...

ShareThis 1.9K

Navigate:

Popular Map Tools

[ZIP Codes Inside a Radius](#)

[How Far Can I Travel](#)

[How Far is it Between](#)

[Radius From UK Postcode](#)

[UK Postcode Map](#)

[Measure Distance](#)

[Area Calculator](#)

[Radius Around Point](#)

[Distance Between UK Postcodes](#)

[UK Postcodes Inside Radius](#)

Map Resources

[Download UK Postcodes](#)

About

[News](#)

[Contact](#)

[FAQ's](#)



Discount Hotels
for 108th
Canton Fair

• Best Rates

Measure Surface Form

Non contact, flat and spherical surfaces
and radius of curvature

Land & Engineering Survey

Chartered Surveyors - Land Laser
Scanning, Utility Mapping

Ads by Google

Radius Around Point

You can use this tool to find the radius around a point on the map. First type in the radius required in kilometers or miles and then click on the map at the center of where you wish the circle to appear. You can then create as many radii as you wish.

Radius Around Point Map



Google search the map Search

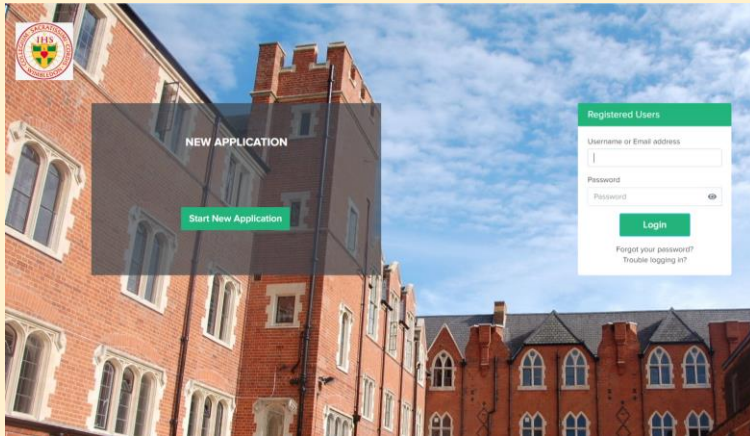
Top Car hire your car in Canary Islands



Common Application Form

- admissions co-ordinated across London
 - online application [<https://www.eadmissions.org.uk>]
 - CAF from local authority in which you live
 - return to your local authority
 - www.merton.gov.uk/admissions
-
- deadline 31st October 2023

Wimbledon College Supplementary Information Form



- online application process
- Applicaa [Live 29 September]
- deadline **31st October 2023**
- importance of information
- special circumstances applications
- priest's reference

Priest's Reference

- upload baptism certificate
- state religious practice
- nominate priest
- please be aware that the priest's reference must be stamped and signed by the priest
- the reference must be uploaded when submitting your application



Wimbledon
College

Religious Practice and Priest's Reference Form for admissions in 2024

Part 1

This form must be completed for all applicants who wish to have their applications considered under the **baptised and practising Catholic criteria**. This part of the application form is for you to state your son's religious practice if he is a Catholic. **When you have completed Part 1 of the form you then need to ask your priest to complete Part 2.**

Boy's Name

Address

Home Telephone

Parent's Mobile

Current School

Home Parish

Name of parish or church
where boy regularly worships
(Please state if he has more than one)

Parents' Names

Is your son a baptised Catholic? ☐ Yes
☐ No

Does your son attend Mass on
Sundays and Holydays of
Obligation? ☐ Yes, every Sunday and Holyday
☐ Yes, but less frequently than every Sunday and Holyday
☐ No

If there is some serious reason why your son is unable to attend Mass on Sundays and Holydays, you are invited to explain the circumstances:

Admissions Process

- Common Application Form
(complete online or return to your LA)
- Wimbledon College Supplementary Information Form
(submit to Wimbledon College via Applicaa)
- deadline is **31st October 2023**
- reference from your nominated priest
- National Offer Day **1st March 2024**
- accept place by **15th March 2024**
- second round of offers
- the appeals process (**May-June 2024**)
- the waiting list (**renew in September 2024**)

Admissions Officer

Mrs Paola Cray

Wimbledon College Edge Hill London SW19 4NS

020 8879 9355 (direct line and voicemail)

020 8946 2533 (switchboard)

registrar@wimbledoncollege.org.uk

wimbledoncollege.org.uk



our pupils are growing to be

Curious & Active

Eager to know, learn, discover or understand something. Participating or engaged in a particular sphere or activity.

READ MORE →



our pupils are growing

Faith
Hope

Faith in God, Faith in others

[READ MORE](#)

COVID-19
Arrangements

Admissions

Transition to the
College

School Organisation

Policies & Procedures

Inspection Reports

Parent Briefings

Parents' Evenings

Refectory Menu

Letters to Parents

[parentinfo.org](#)

Pupil Premium

The School Fund

Friends of Wimbledon
College

Saturday Music School

Mental Health &
Wellbeing

Travel and Travel
Safety

Young Merton

encouraging others to be filled with a hope.



Admissions

[Home](#) » [Parents](#) » [Admissions](#)

Admissions 2024

In September 2024, Wimbledon College will admit 199 boys to Figures (Year 7) without regard for aptitude or ability. The places will be offered according to the criteria set out in the 2024 Admissions Policy

This year's Open Evening will take place on Thursday 28th September from 5.30pm to 8.30pm. For further information please click [here](#).

For information regarding Sixth Form, please visit the [Sixth Form Admissions](#) page.

In this Section

[Virtual Tour of the School](#)

[Admission Appeals](#)

[Admissions Waiting List](#)

[Admissions into Sixth Form](#)

[Merton Admissions](#)

[Surrey Admissions](#)



[In year admissions process.pdf](#)



[In year application form for Merton Schools.pdf](#)



[Prospectus.pdf](#)



[2024 WC Admissions Policy.pdf](#)



[2023 WC Admissions Policy 2023.pdf](#)



[2023 In year Supplementary Information Form.pdf](#)



[2024 Religious Practice and Priest's Reference Form.pdf](#)

OUR STUDENTS ARE

Intensive

Prophetic

Learned

Faith-filled



Generous



Grateful

Hopeful

Curious

Attentive

Transition to the College

[Home](#) » [Parents](#) » [Transition to the College](#)

The College seeks to ensure that the transition from primary to secondary school is as supportive as possible.

[Primary School Visits](#)

[Year 6 Test Day](#)

[Year 6 Parents' Transition Meetings](#)

[Year 6 Pupil Transition Days](#)

[Introductory training session for RUGBY and FOOTBALL](#)

[School Gateway Registration](#)

In this Section

[Open Events](#)

[Admissions](#)

[Transition to the College](#)

[School Organisation](#)

[Policies & Procedures](#)


[Inspection Reports](#)

[Parent Briefings](#)

[Parents' Evenings](#)

Thank you for attending our Open Evening

*Please exit via the
door to the left of the
stage*

 Wimbledon College

OPEN EVENING 2023
EVALUATION

We hope you have found the Wimbledon College Open Night helpful in making up your mind about a secondary school for your son.

We would be grateful if you would spend a few moments completing this evaluation form.

The responses we receive help us to plan next year's Open Night

Name _____

What school does your child attend and in what year? _____

How did you hear about Open Evening?

- ☐ primary school
- ☐ parish
- ☐ made enquiries to Wimbledon College
- ☐ Wimbledon College website
- ☐ London Borough of Merton information

How did you find the length and content of the tour of the school? **not helpful 1 2 3 4 5 just right**

How helpful was the Head Master's talk? **not helpful 1 2 3 4 5 just right**

Did you get helpful answers to questions you asked of staff and pupils? **not helpful 1 2 3 4 5 just right**

What did you find most helpful about Open Evening?

Is there anything we could do to improve Open Evening?



**Wimbledon
College**

Open Evening 2023