



Wimbledon College

Briefing for Lower Grammar Parents

11 September 2024

College Prayer

Lord,
teach us to be generous:
to serve you as you deserve;
to give and not to count the cost;
to fight and not to heed the wounds;
to toil and not to seek to rest;
to labour and to ask for no reward
save that of knowing we do your will.
Amen.

The mission of Jesuit Schools in Britain

Our schools are centred on the person of Jesus Christ and our students are helped and encouraged to take him as their companion and model; to grow in his likeness, becoming men and women of faith who are men and women for others.

They are encouraged to develop their many individual gifts and talents to the full; and to build, in collaboration with all people of good will, the kingdom of God: a kingdom of justice, love and peace.

The mission of Jesuit Schools in Britain

In our schools we commit to ensuring that:

- Each person is offered a spiritual and religious formation in the Catholic Christian tradition and encouraged to deepen a relationship with God.
- Each person is nurtured, supported and challenged to realise their full academic and human potential.
- Each person is encouraged to develop their moral conscience, to challenge injustice, to have the courage to do what is right and be men and women for others.
- Each person is welcomed into our school community, belongs to it and knows that it is part of a global network of Jesuit schools which share a common mission.

Rhetoric Results Day



Rhetoric Results

A Level

A* / A **27.8%** [21.5,19.2]

A* / B **59.9%** [54.8,42.6]

A* / C **83.0%** [79.8,70.5]

**2023, 2019 in brackets*

England

27.6 [26.5,25.2]

53.6 [53.7,51.1]

76.0 [74.5,75.5]

Male England

27.4 [26.4,25.2]

51.5 [50.6,49.4]

73.7 [73.1,73.3]

Vocational

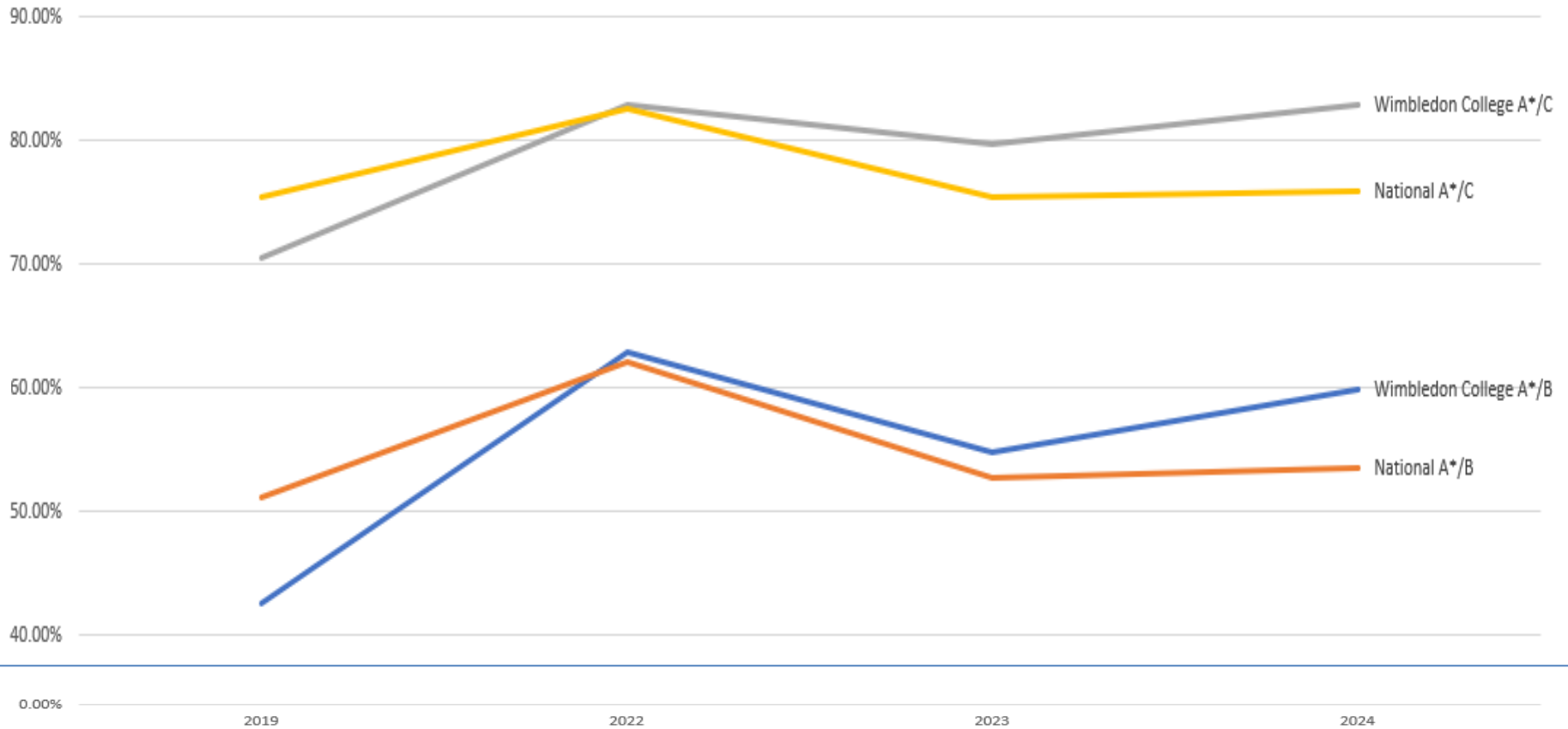
D* / D **50.7%** [45%,31.2%]

D*-M **88.4%** [90%,70.8%]

D*-P **100%** [100%,100%]

Rhetoric Results

Wimbledon College against National Average



Rhetoric Results

- Alex Afonso DD & D
Sport & Exercise Studies Uni of Roehampton
- Bartek Jagoda D*D* & B [A level]
Sport Management at Bournemouth University
- Georgeprabakaran Vincentgeorge D*D & C [A level]
Accounting with Finance at University of Portsmouth
- Mylan Sachet-Dufraisse D*D & C [A level]
Sports Studies at the University of Hertfordshire
- Rocco Leyenda D*D & C [A level]
Sport, PE & Coaching Science at University of Birmingham

Destinations

104 students applied to go to university

44 different universities

Most popular universities

University of Portsmouth	11
--------------------------	----

University of Surrey	5
----------------------	---

Loughborough University	5
-------------------------	---

University of Westminster	5
---------------------------	---

University of Manchester	4
--------------------------	---

University of Southampton	4
---------------------------	---

Destinations

- Sport & Exercise Science/ Sport Business/Sport Management 9
- Accounting / Finance 8
- Business and Management 8
- Engineering [Aeronautical/ Aerospace/ Chemical /Mechanical] 7
- Biomedical Sciences /Pharmacology 5
- Politics/PPE 6
- Psychology 6
- Law 4
- International Relations 4
- Economics 4
- History 4
- Film 4
- Quantity Surveying 3

Syntax Results

GCSE Qualifications

	Wimbledon College			National		
	7+	5+	4+	7+	5+	4+
2024	35.0%	71.3%	84.6%	21.7%	51.9%	67.4%
2023	36.7%	72%	85%	21.6%	52.2%	67.8%
2022	36.7%	74%	87%	26.3%	58.1%	73.2%
2019	27.9%	64%	80%	20.8%	50.6%	67.3%

Syntax Results

All pupils	7+	5+	4+
Any English	34% [41,36,19]	73% [79,80,71]	88% [91,92,86]
Maths	35% [41,44,38]	77% [74,77,70]	89% [91,94,84]
Any English and Maths	25% [30,26,- -]	67% [68,70,58]	84% [87,89,80]

Data in brackets is [2022, 2019]

71% [71%] achieved at least two Grade 5s in Science

56% [51%] achieved the Ebacc pass [75% entered]

Vocational Level 2 [twice as many entries as in 2023]

D*/D 9.2% [4%]

D*/M 41.5% [35%]

D*/P 77% [100%]

Syntax Results

Individual achievements

Anthony Crundwell achieved 10 Grade 9s

Louis Griffiths achieved 7 9s & 4 8s

Mikolaj Dobrowolski achieved 6 9s, 4 8s & 1 7

Freddie Noctor, Aiken Reyes & Evan Rushforth achieved 7 9s & 3 8s

Adrian Bryg achieved 7 9s & 3 7s

Charlie Wilson achieved 5 9s & 5 8s

Thirteen pupils achieved 10 Grade 7s or above

Further 28 pupils achieved at least 7 Grade 7s or above

31 pupils achieved 3+ Grade 9s.

55 pupils achieved a 9 in at least one subject

**Currently 145 returning to Sixth Form
plus several external students**

Our Messages to Pupils this year

- High Expectations [Aim High]
- Focus on Learning
- Positive Behaviour
- Respect for others
- Pride in themselves and in the College
- Attendance and Punctuality [8.25am]

Staff Update

New to the College

Teaching staff

- Andrew Vagg Head of Science
- William Morris RE
- Alex O'Hare PE
- Hana Simons Science

Support staff

- Liudmila Butko TSA
- Thomas Costello LSA
- Lynne Johnston LSA
- Petra Mimmagh Higher Line PSA
- Ben Murley LSA

Staff Update

New to the College

- Henry North
 - Margaret Prince
 - Mikayla McDonald
- TSA
School Counsellor
Reception

Internal Appointments

- Avila Dinsdale
 - Ciara Hill
 - James Stock
- TSA
Head of Chemistry
Head of RS

Summer works

- Resurfacing – drive and area in front of car park
- Resurfacing – Coombe Lane car park and drive
- Windows – Lloyd Room; Business
- Decorating – various stairways/corridors/classrooms/
toilets
- LED lighting – Art classrooms
- Flooring – various
- Benches/basketball boards
- Lockdown alarm
- [new Minibus]
- Vape Detectors [to be installed]

The School Fund

- Thank you
- Where it goes
 - contribution to many of the developments already mentioned
 - supporting extra-curricular activities, which enable the College to provide outstanding opportunities for your sons that are amongst the best in the state sector

The School Fund

- Approximately 60% of our families currently contribute to the School Fund
- Please consider
 - contributing if you are not doing so
 - increasing your contributions
- If you are unable to contribute you may be eligible to access pupil premium funding – this would benefit you and us

The Friends of Wimbledon College

Who are we?

- The Friends are a group of parents, carers and teachers who support the school community
- Everyone is a member!



What do we do?

- Provide refreshments at school events
- Organise social events for parents
- Run the annual uniform sale....helping parents, raising funds and saving the planet!
- Raise funds....repairs to cricket nets, sound equipment for productions



Please get involved.....all are welcome (don't let only having an hour or two to spare put you off....)

- Get added to our mail list (email: friendsofwimbledoncollege@gmail.com or tweet and follow: [@WimbCollFriends](https://twitter.com/WimbCollFriends))
- Raise funds as you shop www.easyfundraising.com and <http://www.smile.amazon.co.uk/>



Lower Grammar expectations

- Standard has moved up
- Lower Grammar pupils should have a better understanding of
 - routines
 - deadlines
 - presentation of work
 - equipment requirements
 - behaviour expectations
 - responsibility

The College 1 to 9 Scale

				S9
			G9	S8
		L9	G8	S7
	R9	L8	G7	S6
F9	R8	L7	G6	S5
F8	R7	L6	G5	S4
F7	R6	L5	G4	S3
F6	R5	L4	G3	S2
F5	R4	L3	G2	S1
F4	R3	L2	G1	
F3	R2	L1		
F2	R1			
F1				

Reporting

What we will report to you and when

Half Term 1 (Oct)	Subject Progress Grades
Half Term 2 (Dec)	Subject Assessment Grades Subject Effort Grades
Half Term 3 (Feb)	Subject Progress Grades
Half Term 4 (Mar)	Subject Assessment Grades Subject Effort Grades
Half Term 5 (May)	Subject Progress Grades
Half Term 6 (Jul)	Subject Assessment Grades (End of Year Exams) Subject Effort Grades Tutor Report

Looking ahead to 2024

KS4 Curriculum & GCSE Options

Higher Line – Core Curriculum

- English Language & Literature 5 periods
- Mathematics 5 periods
- Science 6 periods
 - Core and Additional Science
 - Triple Science
- Religious Studies 3 periods
- Games 2 periods

Total 21 periods

Option Choices

- All boys have to study History *or* Geography
- Most boys have to study a Language

Guidance

- Y9 Parents Evening
- Y9 KS4 Curriculum Evening (Sports Hall)

- GCSE Art
- GCSE Business Studies
- GCSE Computer Science
- GCSE Design Technology
- GCSE Drama
- GCSE French/Spanish
- GCSE Geography
- GCSE History
- BTEC Music
- GCSE Music
- BTEC Performing Arts
- BTEC Sport
- GCSE Physical Education

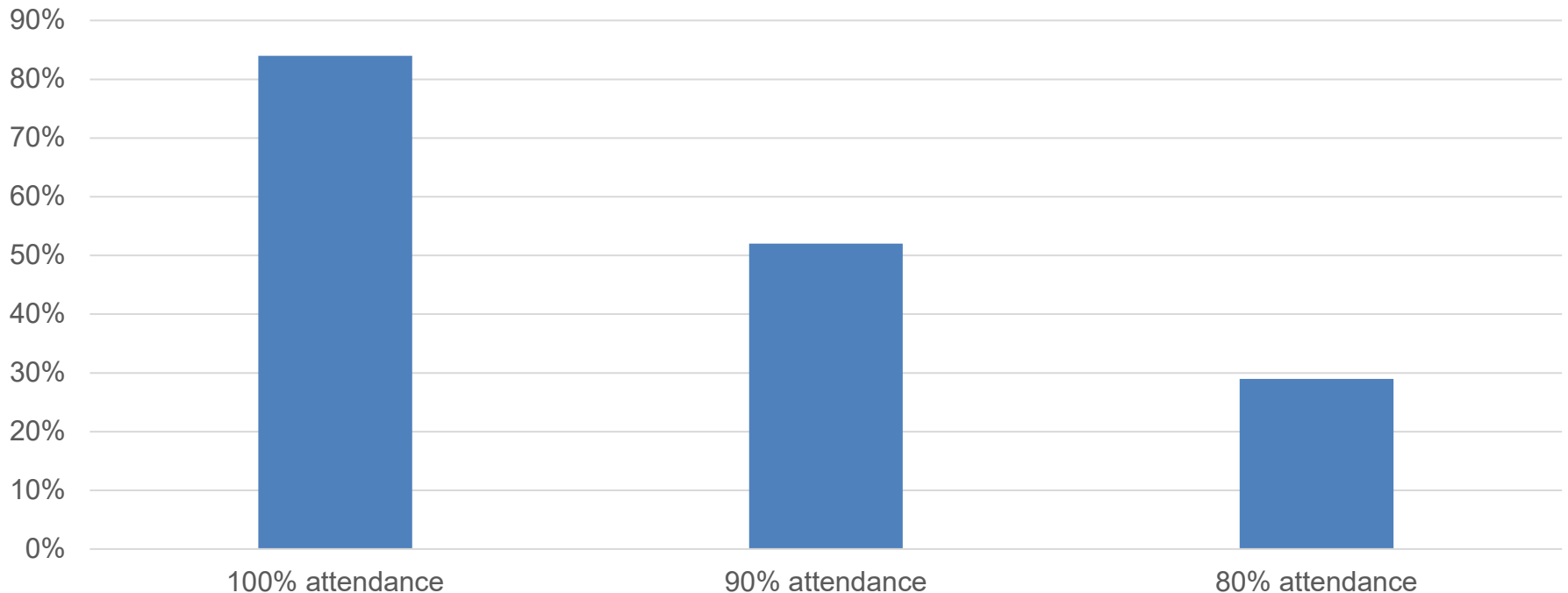
The importance of attendance

- Our expectation is that all pupils should have an attendance of **95% or higher**.
- The Department for Education categorises all pupils who have attendance **below 90%** as **persistently absent**.
- A missed school day is a lost opportunity to learn
- 90% attendance across 1 year: just under 20 days or 4 weeks absence with 120 lessons missed.
- 90% attendance across Y7-11 : 20 weeks or one and half terms, missing a total of around 600 lessons.

The importance of attendance

The Department for Education has carried out research in 2022 which shows the link between attendance and achievement in public examinations.

Percentage of pupils achieving grades 9-4 in English & Maths by attendance group



The importance of punctuality

- Pupils expected in school by 8.25am
- Pupils expected in their classroom for 8.30am
- Pupils arriving **after 8.25am** will be marked as **Late**
- Pupils arriving **after 9.00am** will be marked as **Late (after register closed)**. This now counts as an **UNAUTHORISED** absence (DfE statutory guidance)

The importance of punctuality

Pupils who arrive late to school (after 8.25am):

- **1st late** will result in pupil having to sign in with PSA **before 8.10am the next day** that the pupil attends school.
- **2nd late in a week** will result in an **automatic 30 minute School Detention** and **another 8.10am sign in** on the next day that the pupil attends school.
- **3rd late in a week** will result in a **Saturday sign in**. Pupils are required to arrive at school at 8.30am on Saturday morning and sign in with Senior member of staff on duty.



The Lower Grammar Team

Mr Pierre Cargill

- Deputy Head Master

Mr Christopher Cole

- Lower Grammar
Head of Line

Mrs Jackie Matthews

- Pastoral Support
Assistant

Form Tutors



LGC Ms Walker



LGF Ms McCarthy



LGH Mr Cawthorne



LGL Mr Coleman



LGM Mr Syer



LGO Mr Kuczewski



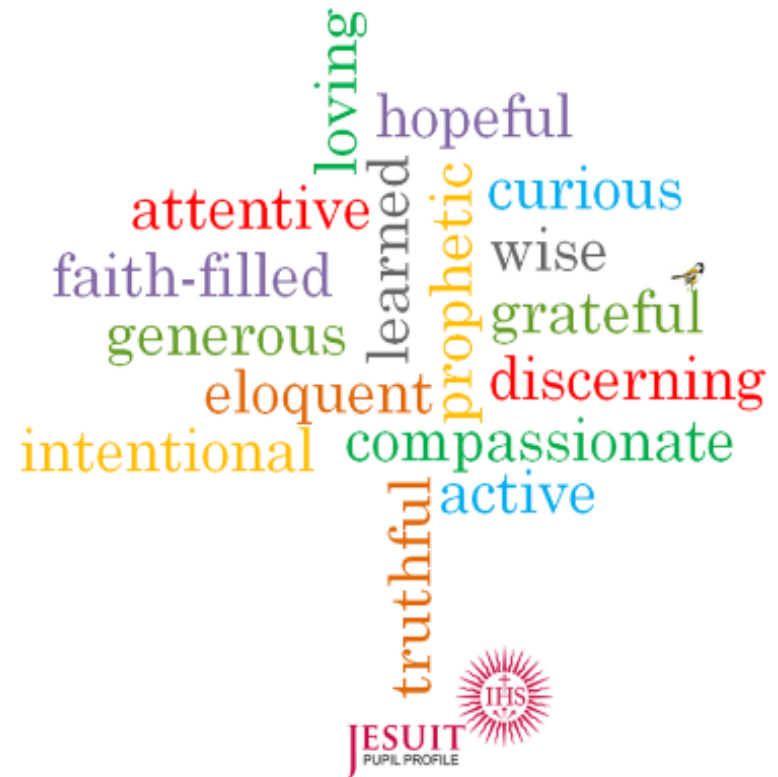
LGS Mr Soalla-Bell



LGX Mrs Apthorpe

Recognising Achievement

- Boys' achievements are recognised through the House Point system



House Points

- Grateful (Appreciation of something done)
- Generous (Helping others)
- Generous (Service to the College)
- Attentive (Focus in lesson)
- Attentive (High standard of presentation)
- Discerning (Making good decisions)
- Discerning (Attempting Extension tasks)
- Compassionate (Showing concern for others)
- Loving
- Faith-filled (Participation in assembly)
- Faith-filled (Magis rep)
- Faith-filled (Participation in Mass)
- Hopeful (Positive Attitude)
- Eloquent (Contribution to class discussion)
- Eloquent (Important Contribution to class)
- Eloquent (Writing)
- Truthful
- Learned (Outstanding progress in assessments)
- Learned (Outstanding attainment in assessments)
- Learned (Excellent Subject Knowledge)
- Learned (Outstanding Classwork)
- Learned (Outstanding Homework)
- Wise (Showing good judgement)
- Curious (Engagement in learning)
- Curious (Wider research or reading)
- Active (Extra Curricular Participation)
- Active (House Activity Participation)
- Intentional (Exemplary conduct)
- Intentional (Exemplary punctuality to school)
- Intentional (Exemplary attendance to school)
- Prophetic (Example to others)

A focus for the year

`Creating men and women for others`

- **Loving and Compassionate:** Last year we spoke a lot about treating others how you wish to be treated.
- **Curios:** Eager to learn, discover new found knowledge in the run up to GCSE options.
- **Learned:** We want boys to maximise their knowledge ahead of their GCSE options, primarily by ensuring they are completing all homework and classwork to the best of their ability.



Studies - Supporting at Home

- Setting a basic routine
- Helping to set up a study plan
- Google classroom/Study skills site/The Knowledge.
- Talk to your son, engage them in conversation, look at their exercise books
- A place to study with correct equipment
- Help - but don't do it for them
- Rest and recreation
- Keep in touch with the school

Attendance: Working with parents

The College works alongside the Merton Educational Welfare Service to ensure that high standards of attendance are kept.

This involves weekly meeting between the Head of Line and the Educational Welfare Officer (EWO) with a specific focus on pupils with persistent absence and levels of **unauthorised** absence.

We will work closely with you as parents to ensure that your child has a high level of attendance.

- Parents of pupils with attendance which is consistently below 90% will be notified by the Head of Line,
- If there is no improvement over time then parents will be invited to a meeting with the Head of Line and the EWO to discuss ways forward.
- Severe levels of unauthorised absence can result in the College asking the Local Authority to action via a Penalty Notice Warning which could then lead to a fine.

Reporting & Requesting Absence

Illness

- As parents you will be asked to provide medical evidence if your son is off school for more than 3 days, for pupils who have a high absence rate this may be asked on the first day of absence.
- If medical evidence is not provided then this attendance will be marked as unauthorised.

Requests for absence from school

- Parents may request that their child be absent from school for a specific reason, **however this must be for exceptional circumstances.**
- Any request must be made in writing/email to the Headteacher (via the Head of Line) outlining the dates and the reason why.
- **You must use the Absence Request form available on the website.**
- If the school does not grant the request, any absence for that period will be marked as **unauthorised.**

Behaviour Code

- Be Positive
 - 100% effort in everything you do
- Be Prepared
 - punctual, properly equipped, homework done
- Follow instructions
 - first time, every time
- Show respect
 - treat others as you would like to be treated
- Look after your school
 - take care of the school's environment and resources



Detentions

- Detentions will take place on a Tuesday and Thursday.
- If your son misses a detention we will notify you by email.
- The consequences of missing a detention will be a lunch time detention the following school day and completing the missed detention at the subsequent midweek detention day.
- Students who miss two detentions in a week will receive a Saturday detention.
- Students not attending a Saturday detention will complete a week long lunchtime detention and attend the following Saturday morning detention.

Extra Curricular

Autumn term

- **Rugby training:** Monday at Coombe Lane after pop 1 games. Minibus available for pop 2 students.
 - Weekly Saturday Fixtures: A, B & C
- **Swimming club:** tbc upon completion of swimming pool work. Galas/competitions still being played away from home.



- **Basketball club:** Tuesdays 3.15-4.15pm



- **Athletics club:** Tuesday lunchtime



- **Gym Club:** Tuesday & Wednesday 3.15-4.30pm



- **Extra-Curricular booklet:** Can be found on the College website. Curriculum/Extra-curricular activities.

Key Dates

- **Open Evening**
 - Thu 26th September
 - Early finish 12.40pm (Thu & Fri), LG students to compete in House Sports
- **Parent / Teacher Evening**
 - Tues 21st January 4.00-6.30pm
 - Online event (SchoolCloud)

Key Dates

- KS4 Curriculum Evening
 - Wed 14th May 4.00-6.15pm
 - Sports Hall
- KS4 Option choice deadline
 - Tbc
- End of Year Exams
 - Mon 30th June – Fri 4th July

Keeping in Touch

- Phone calls
- Email – christopher.cole@wimbledoncollege.org.uk
- Letters home
- Pupil Handbook
- School website
- Parents' evening
- Half-termly report card

FoWC



**Wimbledon
College
International
Food Festival**

Friends of Wimbledon College



**Friday 18th October
7pm**

The evening relies on parents donating mouthwatering traditional dishes for everyone to feast on!

There will be a bar, entertainment and a raffle.

Adults £10 Children £5 Tickets available soon on Arbor

All under 18s to be accompanied by an adult.
More details to follow soon!



